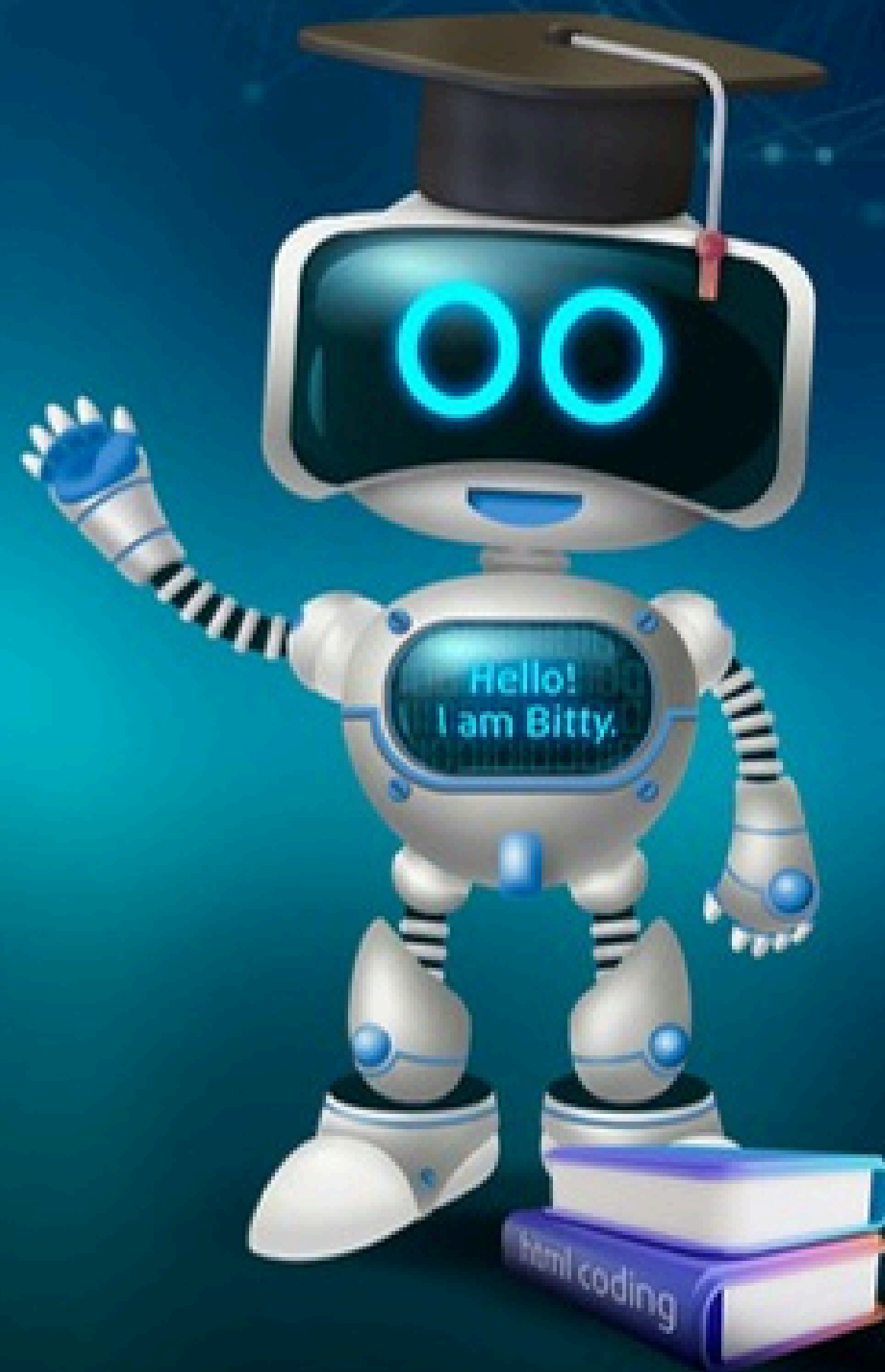


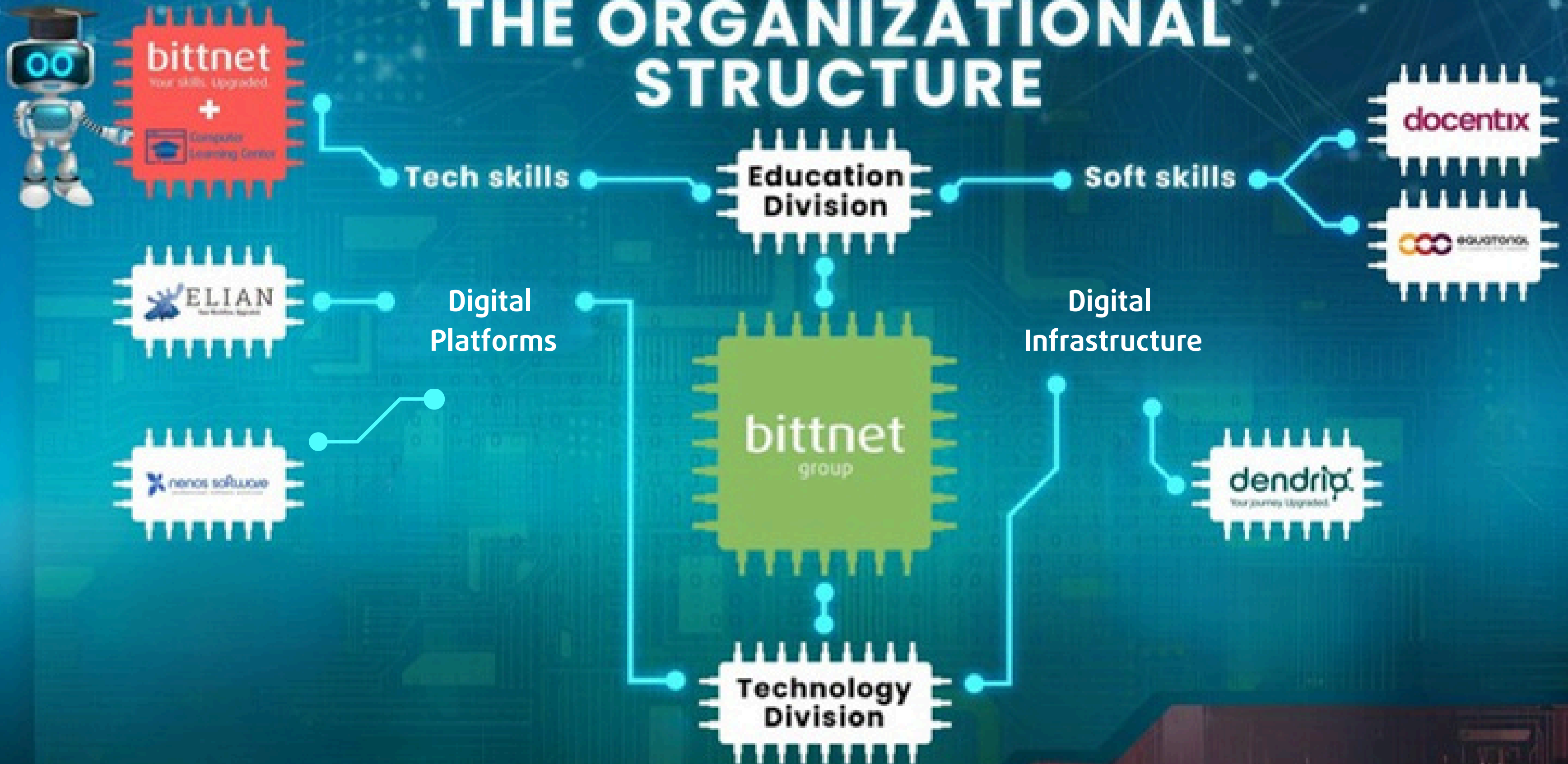
# bittnet

Your skills. Upgraded.

**THE TRAINING  
PARTNER FOR  
THE IT INDUSTRY  
IN ROMANIA**



# THE ORGANIZATIONAL STRUCTURE





# ABOUT US

With a history of over 20 years on the Romanian market, Bittnet Training, part of the Bittnet Group, is a national leader in the IT professional training field and a member of the **LLPA – Leading Learning Partner Association**.

Based on technical experience, but especially based on business values, Bittnet Training currently represents the summation of over:

 **20+ YEARS OF EXPERIENCE**

 **500+ PREPARED COMPANIES AND INSTITUTIONS**

 **39.000+ TRAINED STUDENTS**

 **1.500+ IT COURSES**

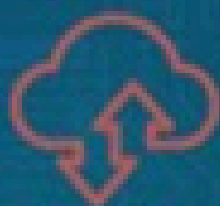
 **80.000+ IT TRAINING HOURS**

 **6 ULTRA-TECHNOLOGICAL CLASSROOMS**

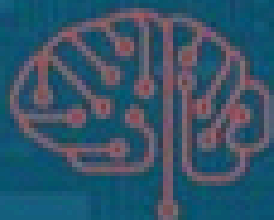
# TECHNOLOGIES

Over 70 technologies covered through the courses

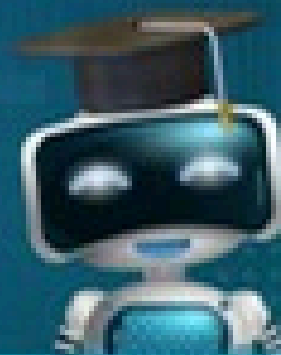
Cloud



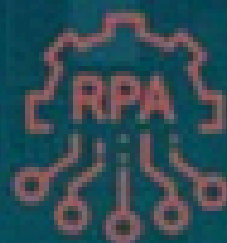
Big Data  
&  
Machine  
Learning



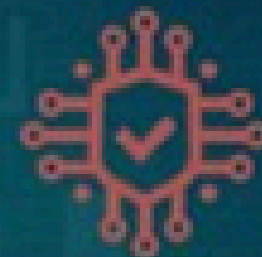
AI  
Artificial  
Intelligence



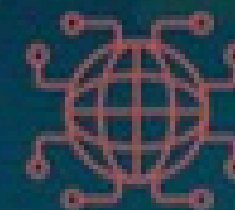
RPA  
Robotic  
Process  
Automation



CyberSecurity



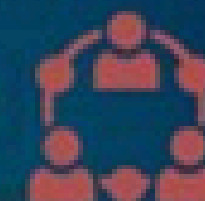
Digital  
Competences



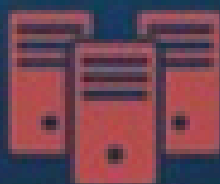
DevOps



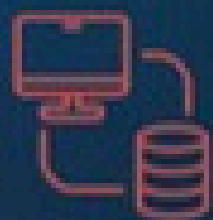
Collaboration



Data Center



Database



Networking



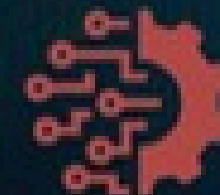
Programming



Virtualization



Frameworks



Project  
Management

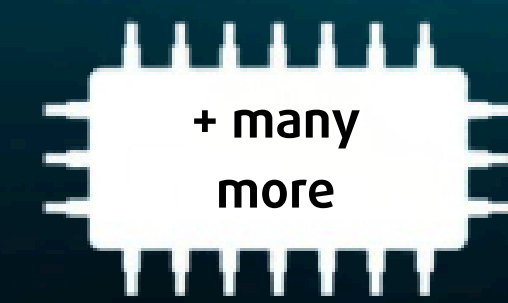
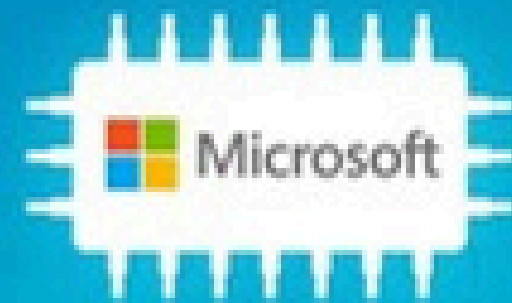


ITIL &  
Management  
Infrastructure



+ many more

# VENDORS



# DELIVERY METHODS AND ORGANIZATION METHODS

## Instructor Led Training

Traditional courses in which both teaching and student participation take place physically at the client's premises or at Bittnet's premises.

## Virtual Classroom

Participating in a virtual class requires live/remote connection regardless of where the course participants are. In this class, the teaching takes place live, with a trainer, the students have access to the same technical and learning resources like in the Instructor Led Training format.

## Hybrid Classroom

It presupposes the physical presence of the students in the classroom with the instructor, with the modern teaching approach that is supplemented with a "live streaming" connection based on online, distance learning, in real time and simultaneously with the participants in the classroom.

## Self-paced Training

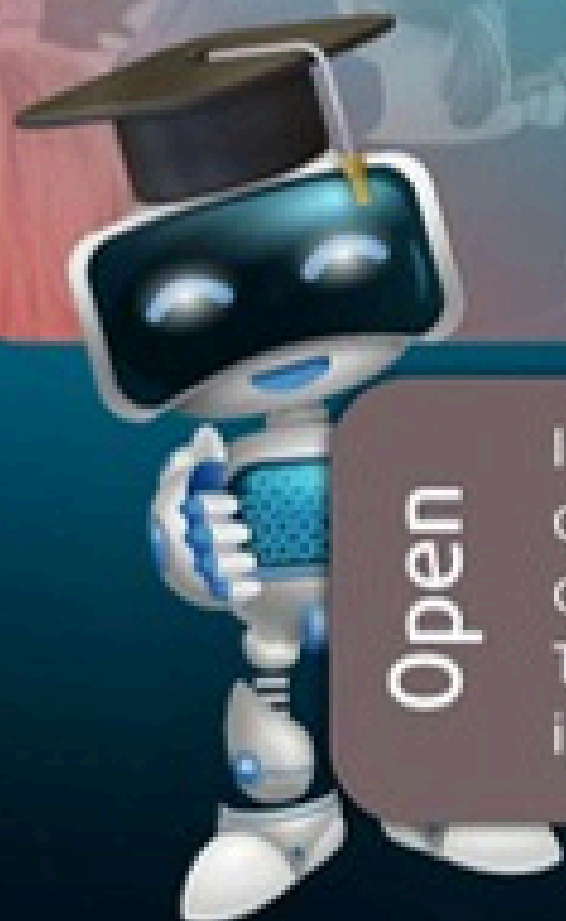
Courses with access to study materials and going through them at your own pace.

### Open

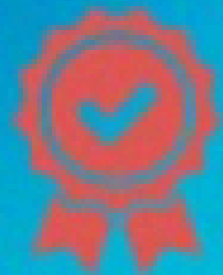
In Open courses, the minimum number of participants required for the organization is 8, maximum 16 people. The participants are diverse, working in several companies.

### Closed

Closed classes can be organized both at the client's premises and at ours. The trainees participating in this group will be exclusively from one company, and the minimum number of participants is 8.



# CERTIFICATIONS AND ACCREDITATIONS



**QUALITY MANAGEMENT**  
SR EN ISO 9001:2015



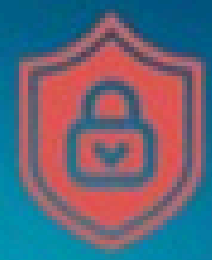
**ENVIRONMENTAL MANAGEMENT**  
SR EN ISO 14001:2015



**MANAGEMENT OF  
EDUCATIONAL  
ORGANIZATIONS**  
ISO 21001:2018 EOMS



**MANAGEMENT OF SERVICES**  
ISO/IEC 20000-1:2011



**INFORMATION SECURITY  
MANAGEMENT**  
SR EN ISO/CEI 27001:2013



**Royal Cert**  
World Certification Body



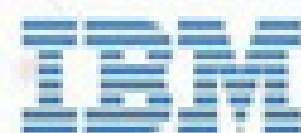
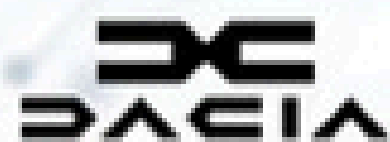
**International Accreditation Association  
for Conformity Assessment**



**German Accreditation Body**



# OVER 500 TRAINED COMPANIES AND INSTITUTIONS

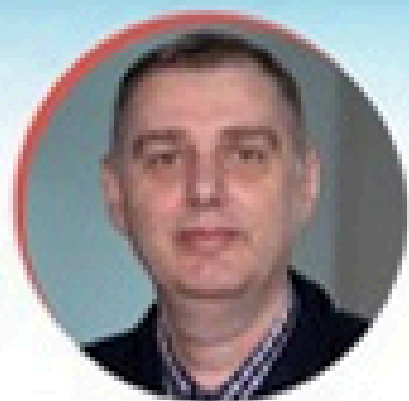


+ many more





# COURSE DELIVERY INFRASTRUCTURE FORMED OF OVER 50 ACCREDITED AND CERTIFIED TRAINERS



**MARIAN PANDILICĂ**

Senior Microsoft  
Certified Trainer

Microsoft Learning  
Consultant 2010-2024

Customer Learning Architect

Cloud Solution and  
Cybersecurity Architect



**IOAN GOIAN**

Cisco CCSI #35337

Senior Systems Engineer

Network Designer



**LUCIAN CONSTANTIN**

Microsoft Certified  
Trainer



**ȘTEFAN DOLEA**

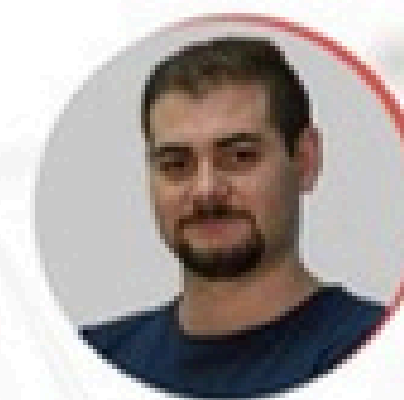
Oracle Certified  
Trainer



**GABI VĂLSAN**

Microsoft Certified  
Trainer

ITIL® Trainer



**BOGDAN STĂNILĂ**

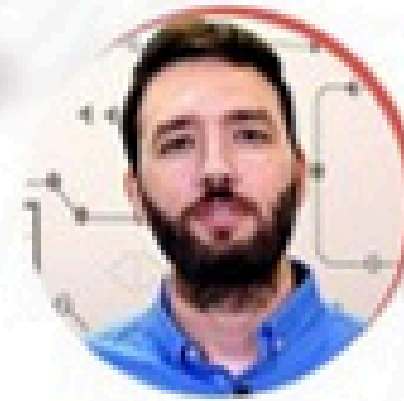
Cisco CCSI #35336

Amazon Web Services



**ȘTEFAN RADU**

Microsoft Certified  
Trainer



**MIHAI DUMITRAȘCU**

Senior Systems Engineer

Cisco Certified System  
Instructor



**ADRIAN BUNEA**

ITIL® Trainer

+ many others

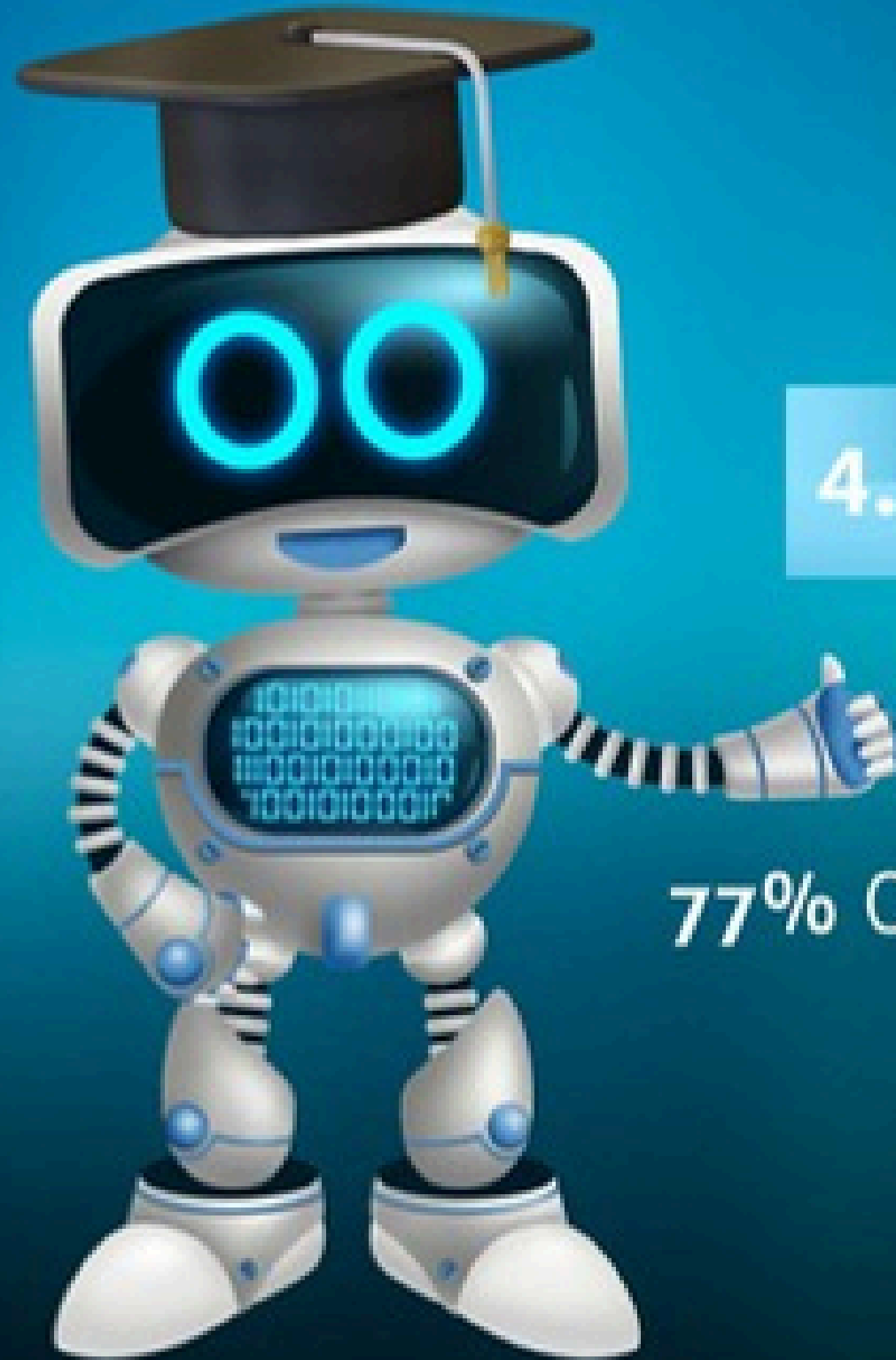


# 6 ULTRA-TECHNOLOGICAL CLASSROOMS



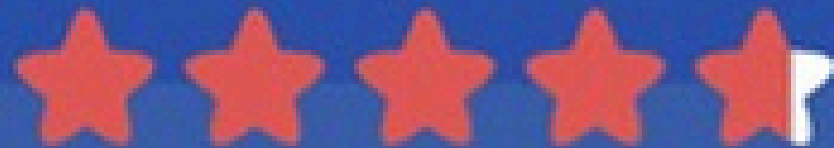
- ❑ High-Resolution Audio Speakers
- ❑ Centre volume attenuators
- ❑ Zone mixer and amplifier with 4 output zones
- ❑ Epson FHD High-Resolution overhead projectors
- ❑ Blackmount electric wall/ceiling projection screens
- ❑ 2-chamber optical interactive whiteboards
- ❑ HDMI video matrix
- ❑ Video conferencing or blended training delivery solutions with 2 video cameras and 2 microphones/room
- ❑ Microphone for wireless systems, dynamic microphone capsule, cardioid
- ❑ Digital wireless system with pocket transmitter
- ❑ Video matrix 8 inputs 8 outputs - selectable sources - remote control
- ❑ Low impedance speakers

# CUSTOMER SATISFACTION



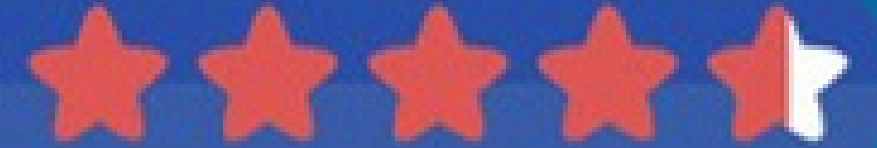
Course quality rating

4.83



Rating trainers

4.70



**77% OF THE STUDENTS SAY THAT THEIR PROFESSIONAL PERFORMANCE  
INCREASED BY OVER 15% AFTER THE FIRST 30 DAYS**

*\*Sample of 5800 participants*

# TESTIMONIALS



“ The Bittnet Training trainers left an excellent impression on me with their professionalism. The collaboration had a positive impact on our performance, managing to improve our skills and significantly develop our knowledge in our field of expertise. ”



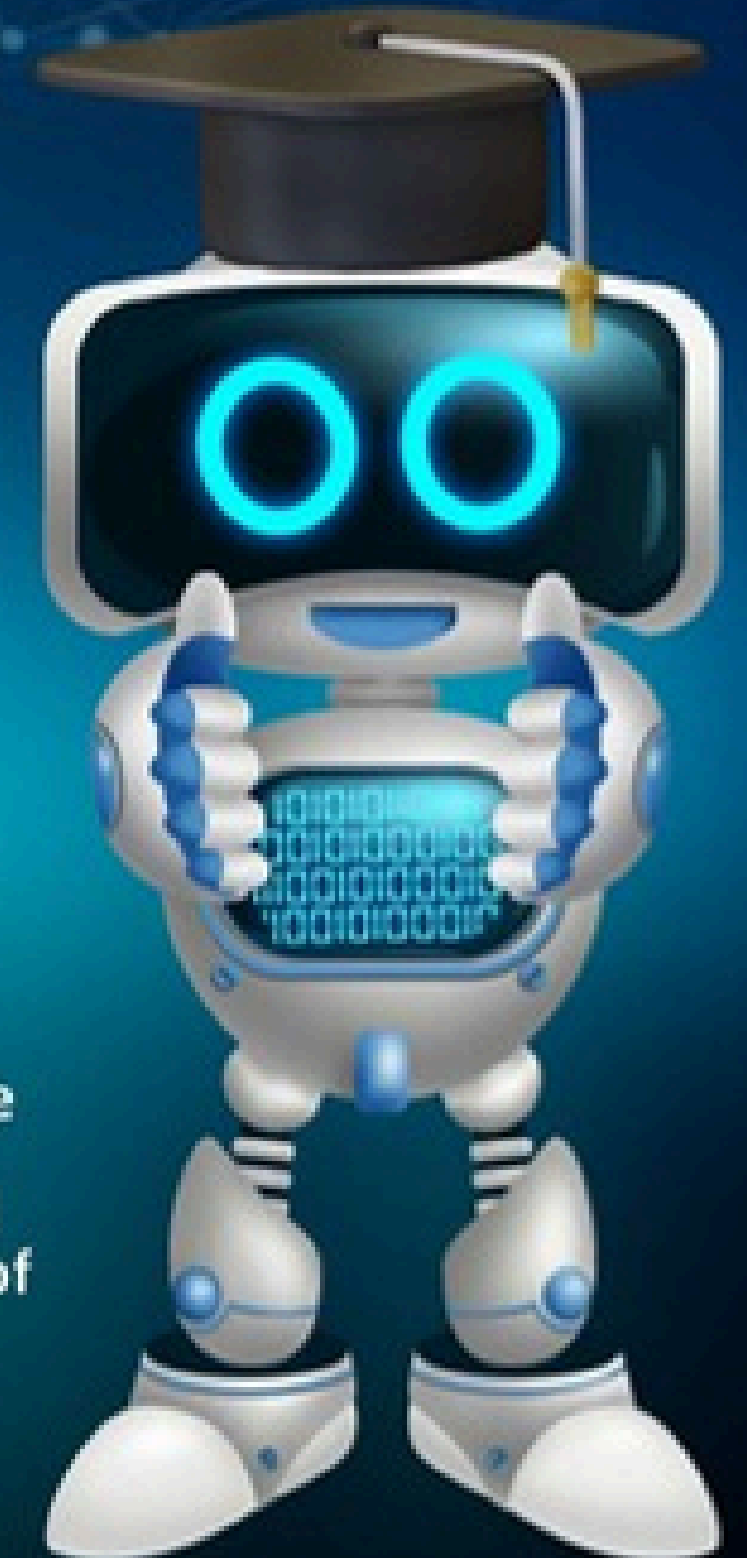
“ They shared their knowledge with us and taught us how to operate our AWS assets and increase their effectiveness and efficiency. Recommended Bittnet as a partner you can depend on and that can deliver quality services in the agreed time and costs. ”



“ They do an excellent job, are always punctual and will go the extra mile for you. I am happy to recommend Bittnet Training services. ”



“ After several months of work, it seems that we have found the best partner for our technical needs in Bucharest. I came for the attitude and professional skills and I stayed for the quality of the services. ”



# bittnet

Your skills. Upgraded.



Progresului Street, Nr.1,  
One Cotroceni Park Office, Building B  
4th Floor, Bucharest, Postcode 052034



(+40 21) 527 16 00  
(+40 21) 527 16 98  
[askformore@bittnet.ro](mailto:askformore@bittnet.ro)